



# Burkhard Böckem

CHIEF TECHNOLOGY OFFICER



R&D  
strategy



Product  
innovation



Technology  
leadership



# Innovation

---

## **Technology:**

Unmatched Technology Portfolio

Products that create impact

## **Reality:**

Enhanced with insights

Improved by actionable information



# Culture of innovation

**Driven**

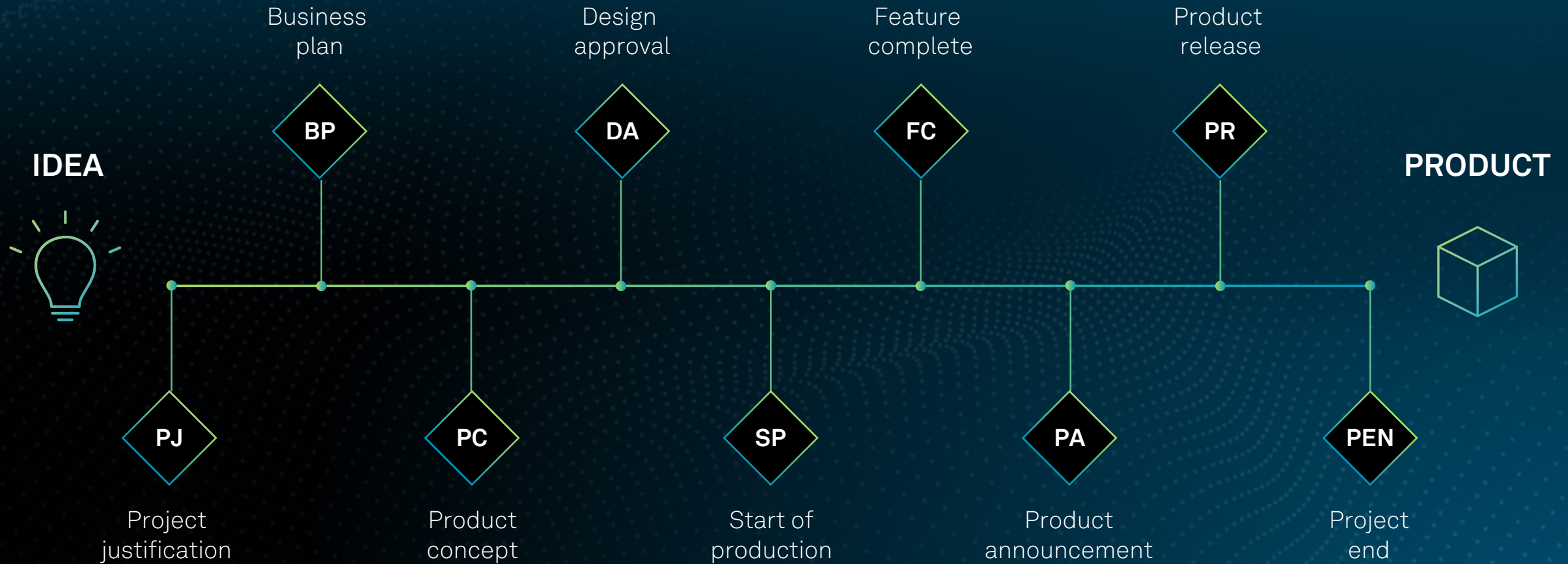
by customer  
demand

**Delivered**

beyond  
expectations



# Hexagon Innovation Process



Powered by innovation





# Powered by innovation

CONTINENT	R&D HEADCOUNT
Asia Pacific	2240
Africa	154
Europe	2603
North America	1645
South America	131
Total	6777

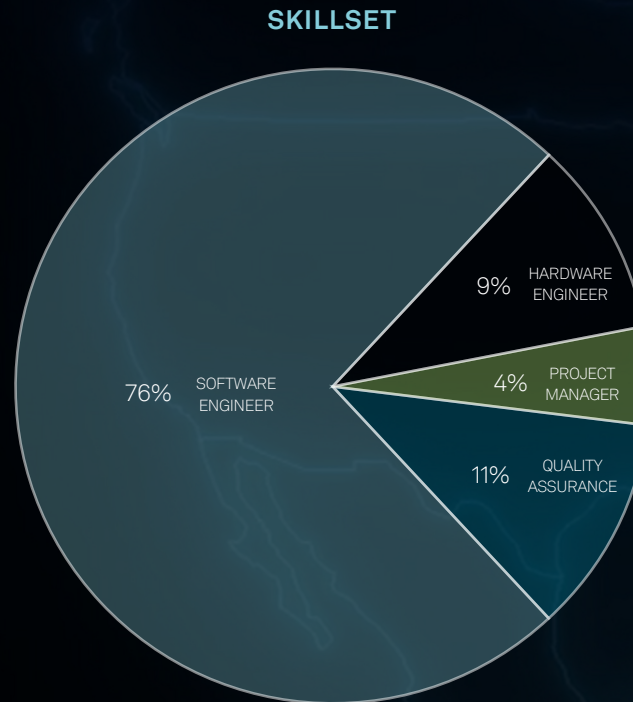
DIVISIONS	R&D HEADCOUNT
Autonomous Solutions	740
Geosystems	1934
Manufacturing Intelligence	1560
Asset Lifecycle Management	1592
Safety, Infrastructure, Geospatial	559
Innovation Hub	392



# Powered by innovation

CONTINENT	R&D HEADCOUNT
Asia Pacific	2240
Africa	154
Europe	2603
North America	1645
South America	131
Total	6777

DIVISIONS	R&D HEADCOUNT
Autonomous Solutions	740
Geosystems	1934
Manufacturing Intelligence	1560
Asset Lifecycle Management	1592
Safety, Infrastructure, Geospatial	559
Innovation Hub	392



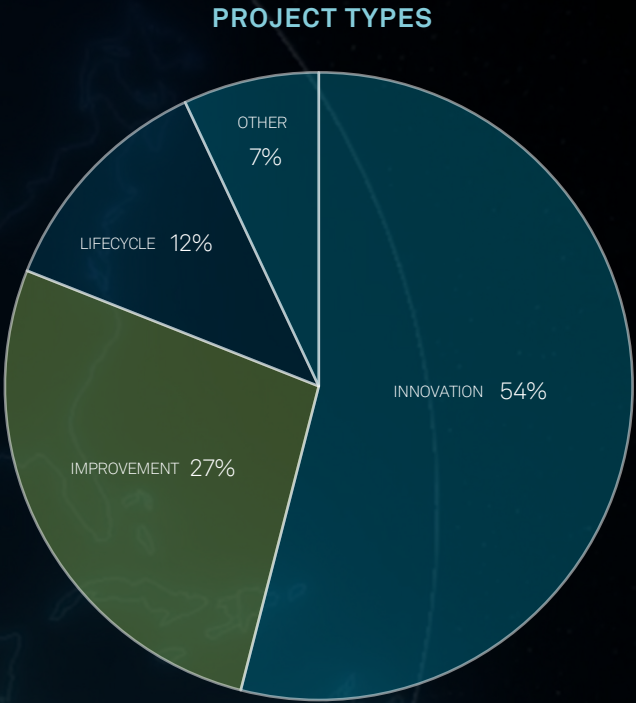
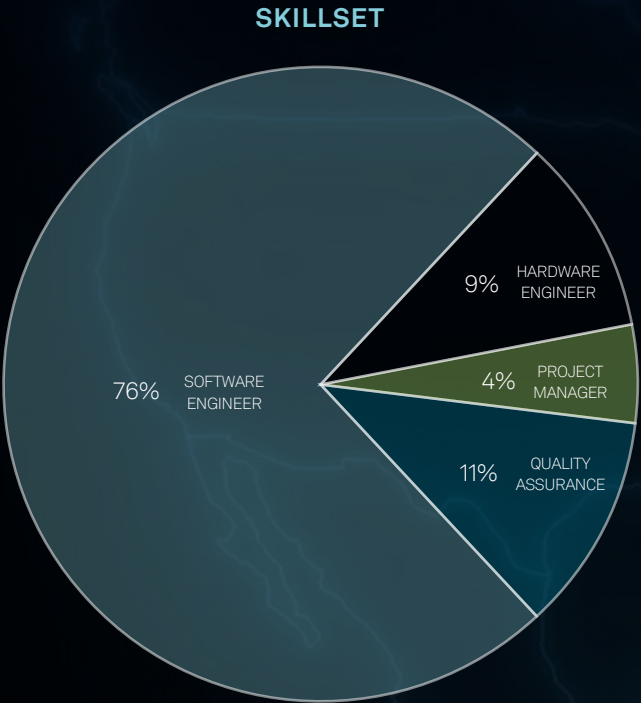
GROSS R&D INVESTMENT 2023YTD	
Total gross R&D Investment (mEUR)	Gross R&D cost / sales
610	15%



# Powered by innovation

CONTINENT	R&D HEADCOUNT
Asia Pacific	2240
Africa	154
Europe	2603
North America	1645
South America	131
Total	6777

DIVISIONS	R&D HEADCOUNT
Autonomous Solutions	740
Geosystems	1934
Manufacturing Intelligence	1560
Asset Lifecycle Management	1592
Safety, Infrastructure, Geospatial	559
Innovation Hub	392



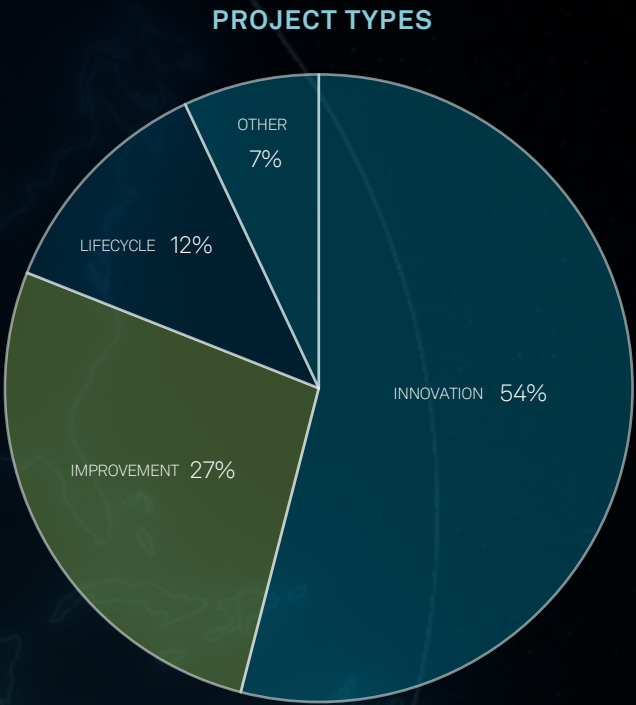
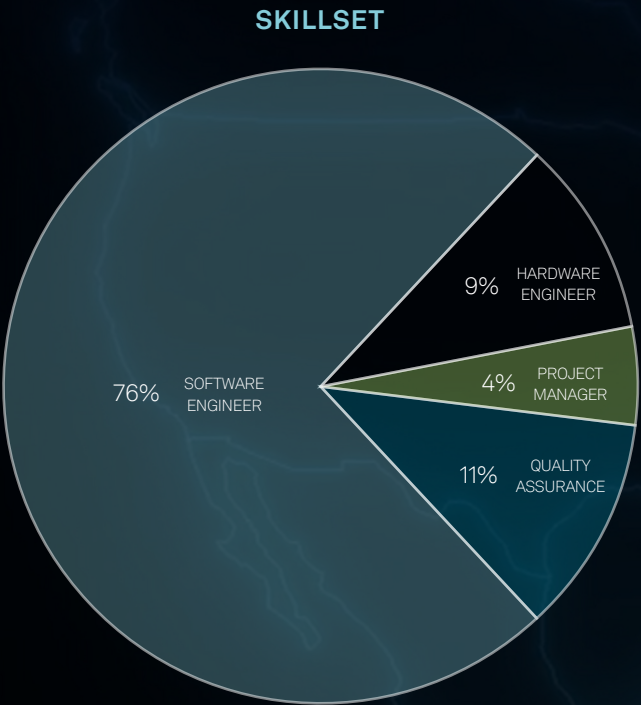
GROSS R&D INVESTMENT 2023YTD	
Total gross R&D Investment (mEUR)	Gross R&D cost / sales
610	15%

# Powered by innovation

CONTINENT	R&D HEADCOUNT
Asia Pacific	2240
Africa	154
Europe	2603
North America	1645
South America	131
Total	6777

DIVISIONS	R&D HEADCOUNT
Autonomous Solutions	740
Geosystems	1934
Manufacturing Intelligence	1560
Asset Lifecycle Management	1592
Safety, Infrastructure, Geospatial	559
Innovation Hub	392

RELEASES	432
----------	-----



PATENTS	
Total patents	2023 year to date
5528	59

GROSS R&D INVESTMENT 2023YTD	
Total gross R&D Investment (mEUR)	Gross R&D cost / sales
610	15%





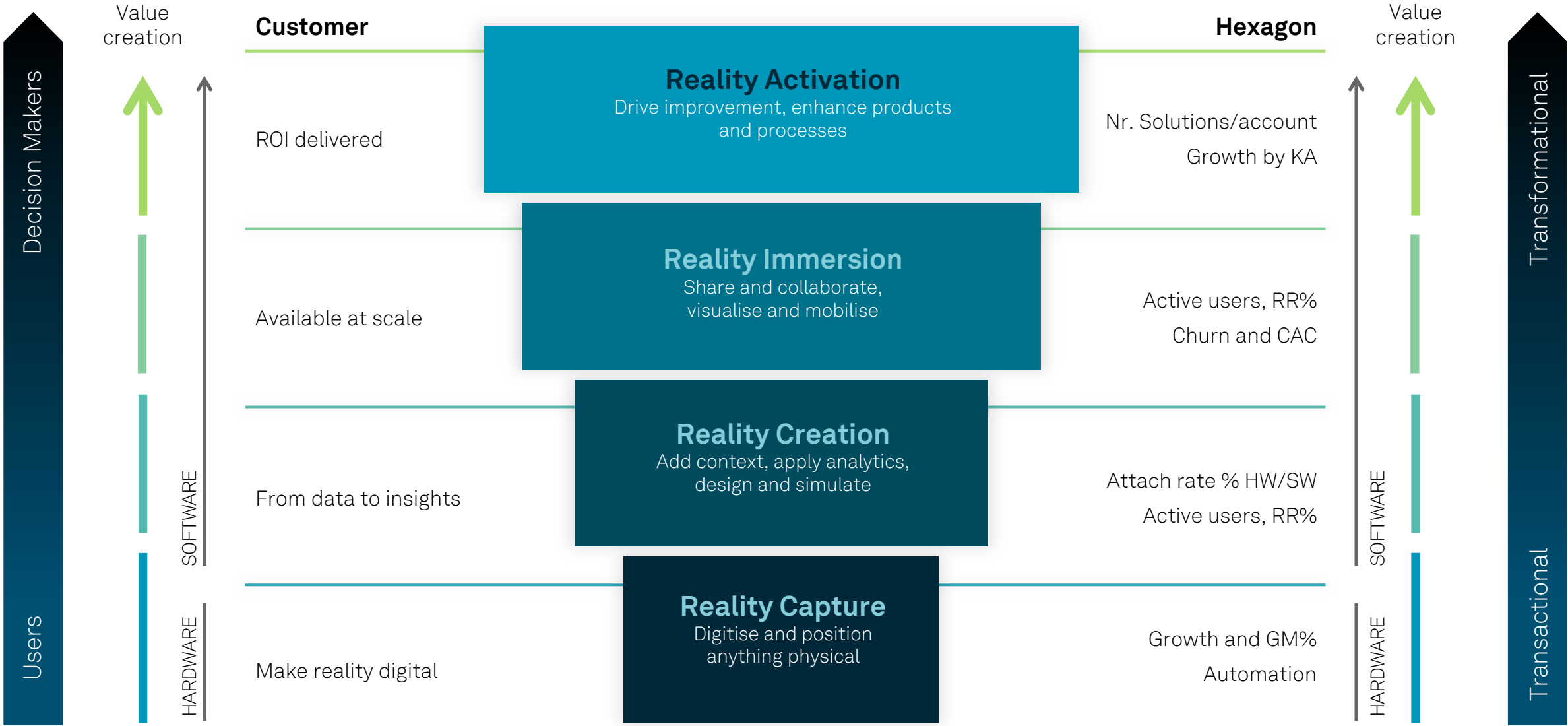
# Award-winning innovation



**HEXAGON**



# Core competencies drive value creation





# The 3D data value creation opportunity translates into the R&D portfolio



## Reality Capture

Measurement,  
scanning  
and positioning  
capabilities



## Reality Creation

Apply AI and analytics,  
design and simulate,  
add industrial context



## Reality Immersion

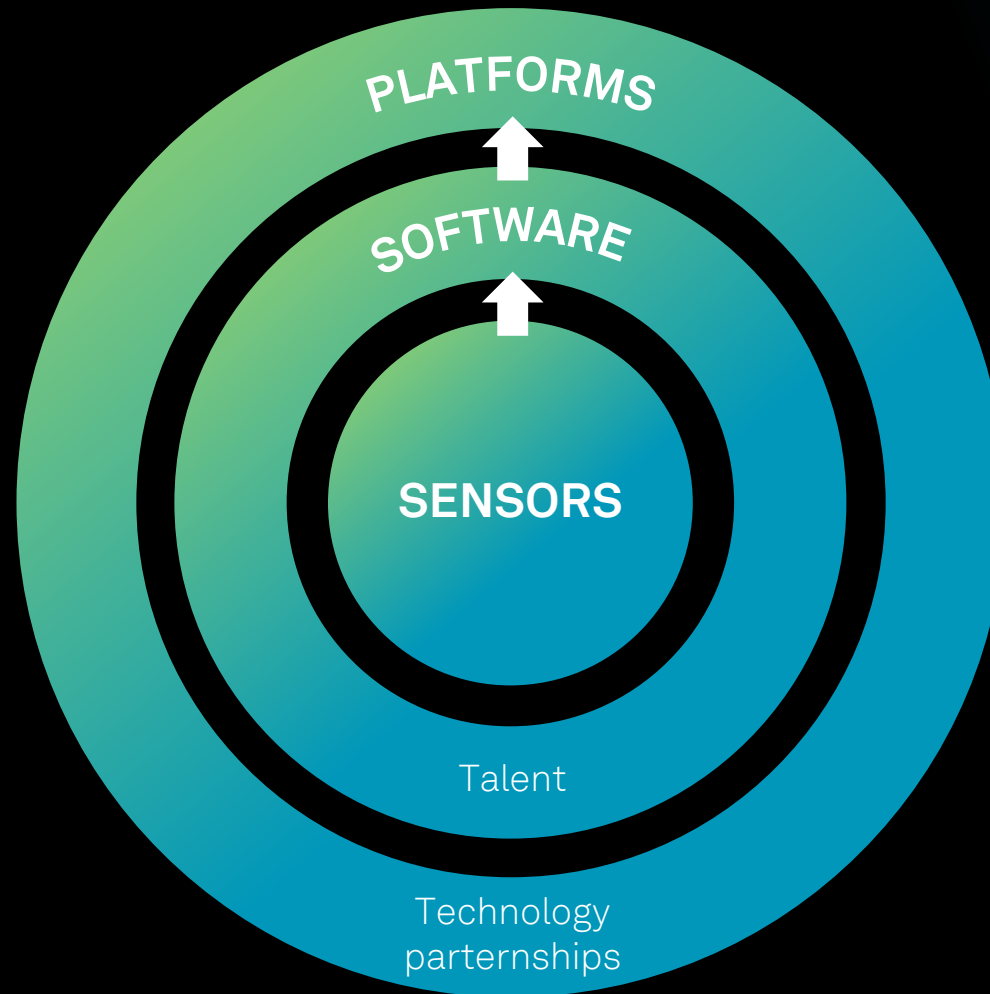
Share and collaborate  
information,  
visualisation tools



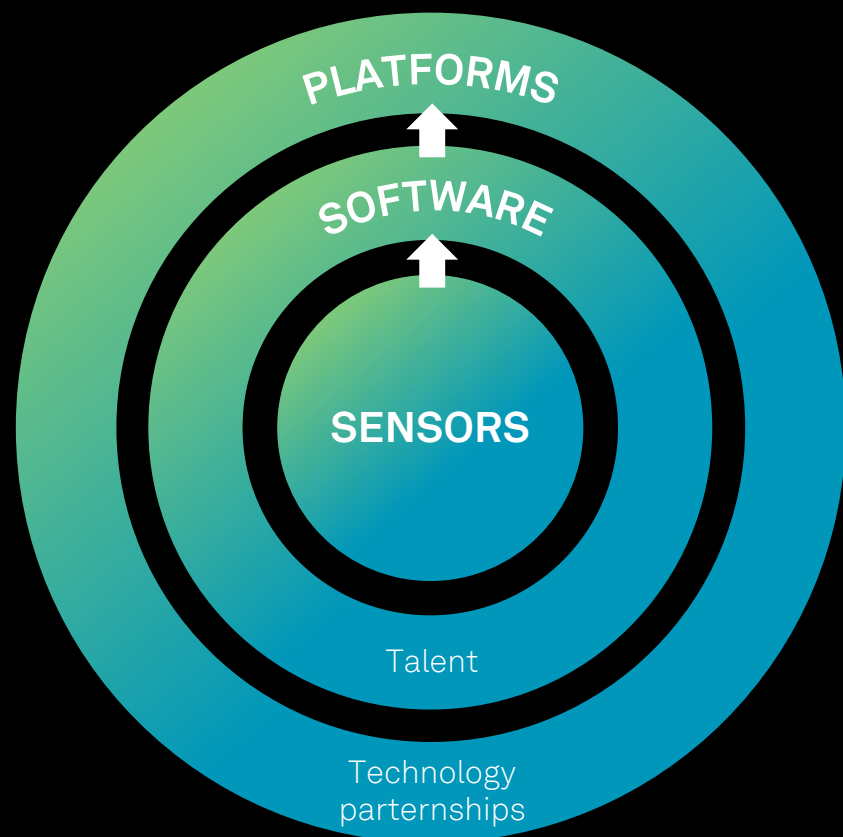
## Reality Activation

Improve outcomes,  
steer and control  
processes, reality  
delivers ROI

# R&D Strategy



# R&D Strategy



## R&D Execution

## Business impact

Cloud native platforms  
Combined data strategy and AI

Higher degree of revenue, drive usage/insights, ease deployment, enable cross-selling of components, data continuity, recurring revenue

Visualisation and collaboration technologies

Expand reach of 3D data, grow user base, recurring revenue

Next generations devices, connectivity, edge processing and full ecosystems

Continued GM% accretion (lower cost, modularity, higher performance)

Fused sensor technology & robotics enabled portfolio

ROI for customer through automation and higher throughput drives commercial impact

Acquire best R&D talents

Highly differentiated and best in class portfolio leads to commercial wins

Technology partnerships

Proximity to scaling innovation while Hexagon focuses on core and TAM



# R&D strategy: Diversifying the products portfolio

## STRENGTHEN

**Maintain technology leadership**

---

Strengthen our technology leadership position

Maintain our loyal relationship with our long-term customers

## GROW

**Expand through innovation**

---

Investing in growth by bringing in new software new features

Making the software deployable on different platforms

## TRANSFORM

**by technology disruption**

---

Technology disruption where none of the competitors nor start-ups can follow

# R&D Investment Priorities: Diversifying the product portfolio

35%

## **Strengthen**

Maintain  
technology leadership

50%

## **GROW**

Expand  
through  
innovation

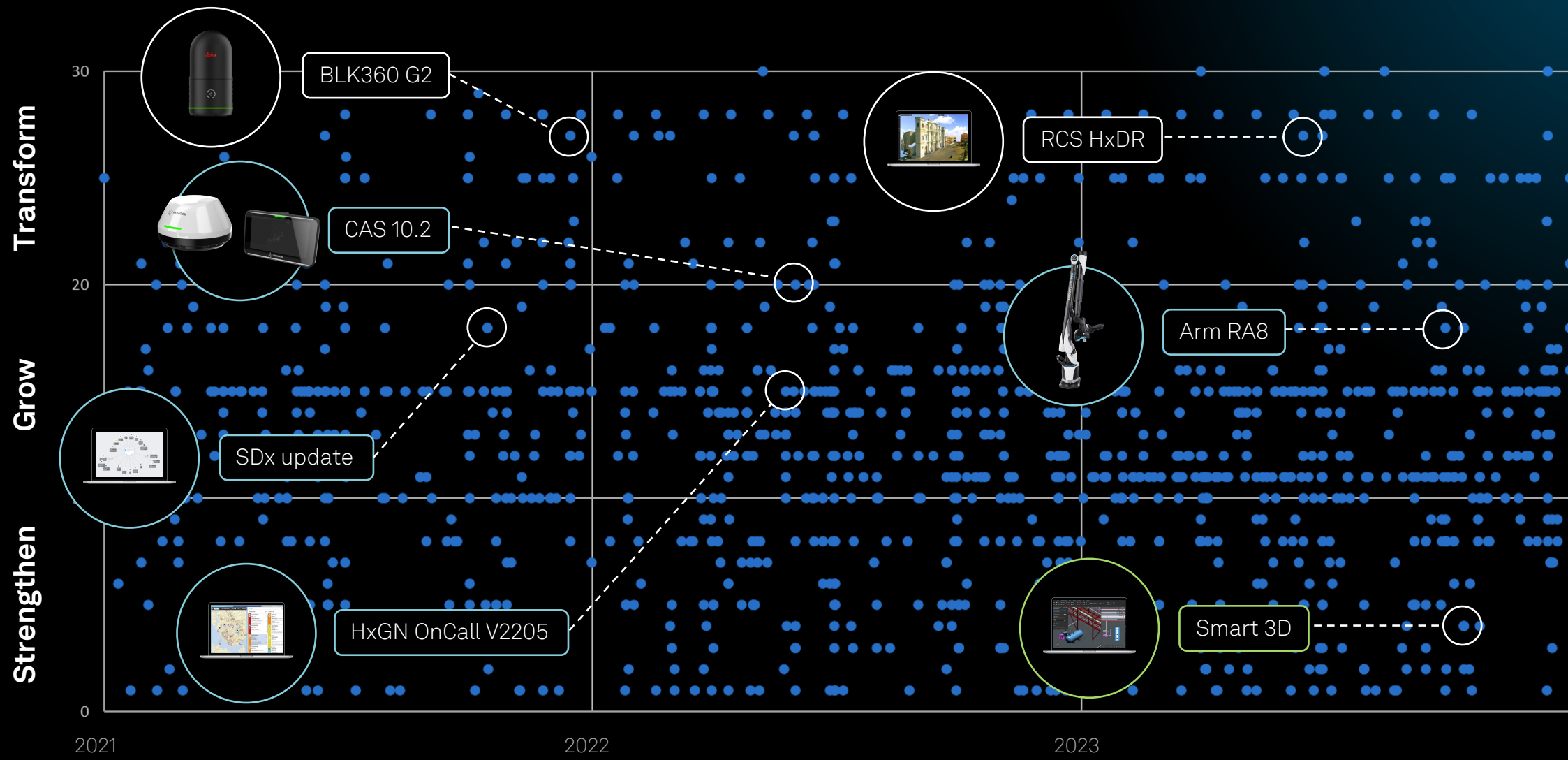
15%

## **TRANSFORM**

by technology  
disruption

# Roadmap development 2021 – 2023

1200+ product releases





# Strengthen: Market leadership



Manufacturing  
Intelligence



Asset Lifecycle  
Intelligence



Geosystems



Autonomous  
Solutions



Safety,  
Infrastructure,  
Geospatial

Manufacturing  
Intelligence



AIRBUS



PRODUCTS

CMMs, Arms (RA8 V3)  
Metrology Software  
Production Machining Suite  
Multiphysics Software Suite

Asset Lifecycle  
Intelligence



PRODUCTS

Smart Materials  
Caesar II  
Smart 3D  
Smart PID Plant  
Plant State Integrity

Geosystems



ferrovial

SKANSKA

PRODUCTS

Leica Total Stations  
Leica GNSS Systems  
Surveying Workflow Software  
HxGN GeoCloud

Autonomous  
Solutions



KONGSBERG



PRODUCTS

OEM7  
GAJT-700  
GNSS Correction Services

Safety,  
Infrastructure,  
Geospatial



PRODUCTS

HxGN OnCall  
HxGN Networks  
Luciad  
M.app Enterprise  
Qognify VMS



# Grow: Market leadership



Manufacturing  
Intelligence



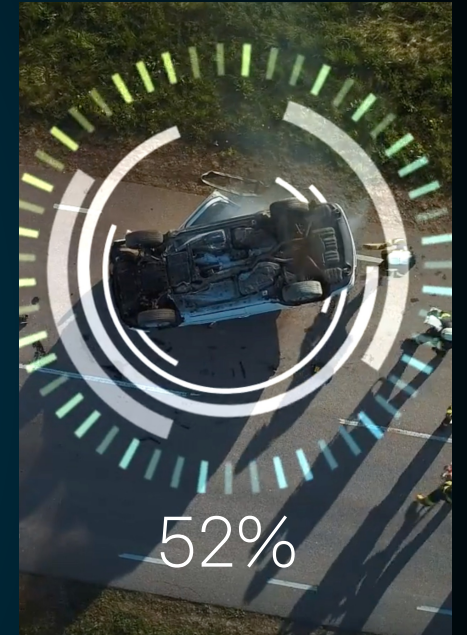
Asset Lifecycle  
Intelligence



Geosystems



Autonomous  
Solutions



Safety,  
Infrastructure,  
Geospatial



An aerial photograph of a complex industrial facility, likely a refinery or chemical plant. The image shows a dense network of white pipes, metal walkways with orange safety railings, and various industrial vessels. A large, vertical cylindrical tank is prominent on the right side. In the center, a semi-transparent digital twin model of the facility is overlaid, showing a 3D wireframe representation of the physical structure. The text "SDx: Digital twin" is superimposed in white, bold font across the center of the image. Several workers in safety gear are visible on the ground level, providing a sense of scale to the massive industrial complex.

**SDx: Digital twin**

# SDx – Smart digital twin solution

## Outcomes

Reduced project costs

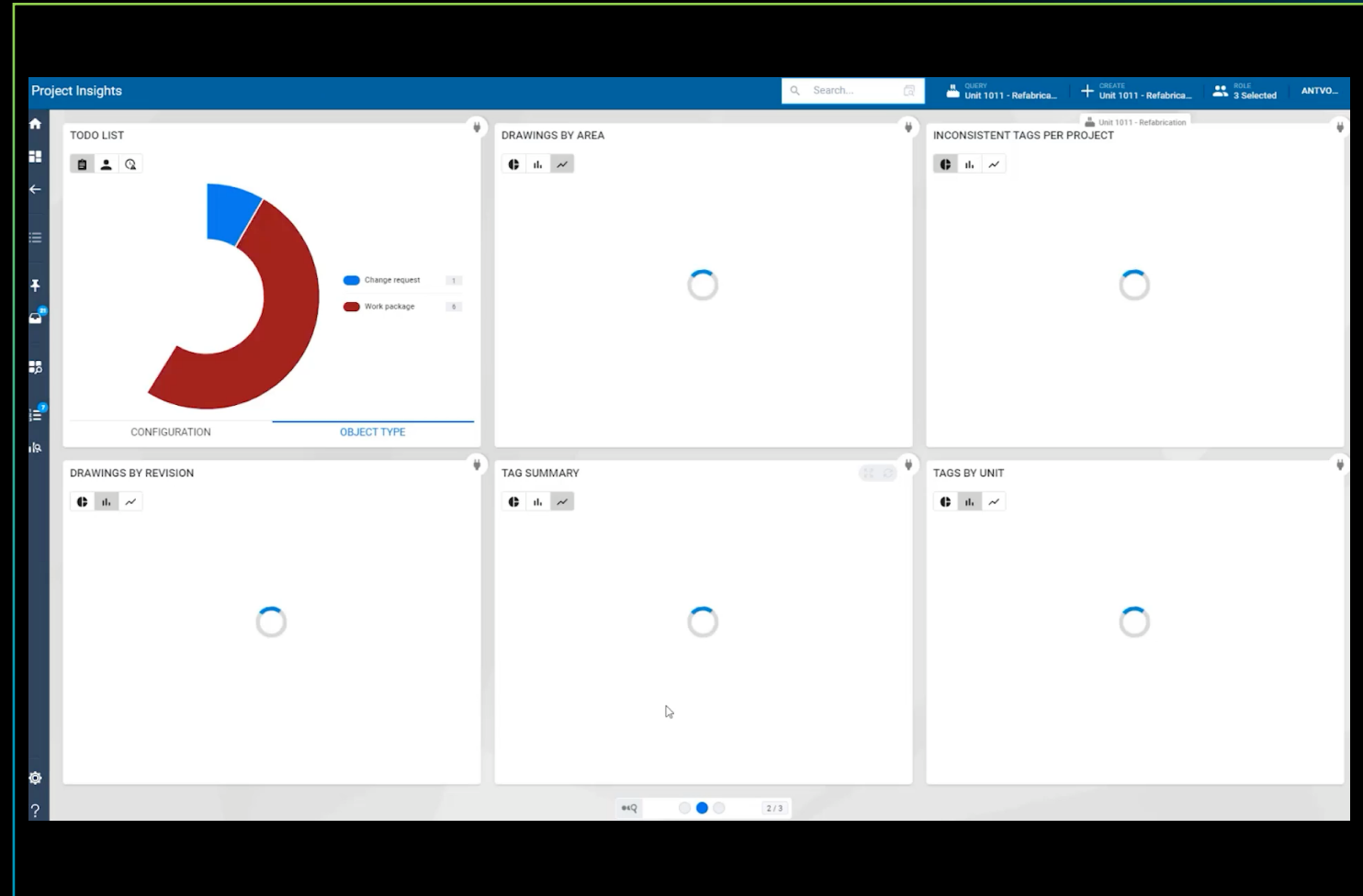
Reduced downtime

Reduced risk and  
elevate safety

Improved project  
execution

Increased efficiency

Increase profitability





An aerial photograph showing three red Mineral Resources trucks driving on a wide dirt road in a desert environment. The trucks are carrying large red containers. The word "Autonomy" is overlaid in large white text across the middle of the image.

# Autonomy



# Autonomous platform

## Outcomes

---

Solving labor shortages

Increasing safety of life

Reducing fuel  
consumption

Increasing operational  
efficiency



# R&D Efficiency



# R&D Efficiency

## Software

## Hardware

Single Sign-On	Governance	Digital Reality	AI  IoT	Encoder	GNSS	Control
Data Integration	Data Hub	Self-Service		Tilt	Imaging	Inertial
Cloud Processing	Process automation	Visualisation		GrandSLAM	Connectivity	LiDAR
Marketplace	Service Co-pilot	Security		Edge Processing	ATR	Security
Collaboration	eCommerce	Licensing				
iPaaS				Radar		



# R&D Efficiency

## Software

Single Sign-On	Governance	Digital Reality
Data Integration	Data Hub	Self-Service
Cloud Processing	Process automation	Visualisation
Marketplace	Service Co-pilot	Security
Collaboration	eCommerce	Licensing
iPaaS		

AI

IoT

## Hardware

Encoder

GNSS

Control

Tilt

Imaging

Inertial

GrandSLAM

Connectivity

LiDAR

Edge Processing

ATR

Security

Radar

**Total  
Station**





mergeTEC

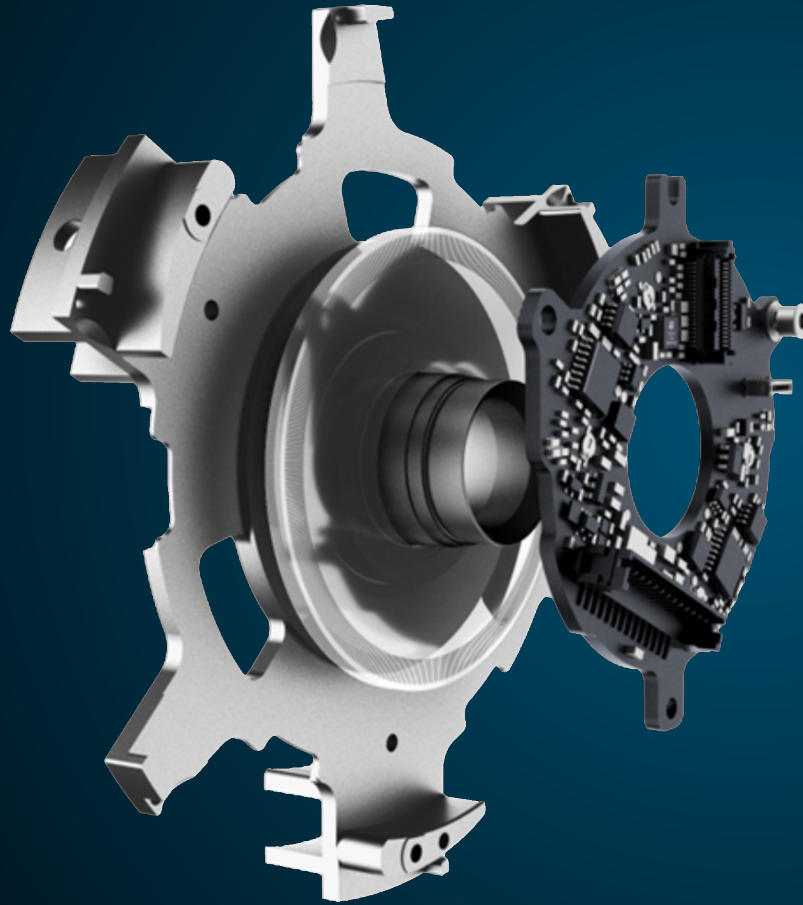
# R&D Efficiency: Encoder Platform

**~85,000**  
encoders  
produced every  
year

**Up to 10X**  
Less expensive to  
make than buy

**Proprietary**  
technology

**Fully**  
integrated



Total  
Stations



3D Disto



Laser  
Scanners



Portable  
Arms



BLK  
Family



Laser Tracker  
Systems

Manufacturing  
Intelligence

Geosystems

Safety,  
Infrastructure,  
Geospatial

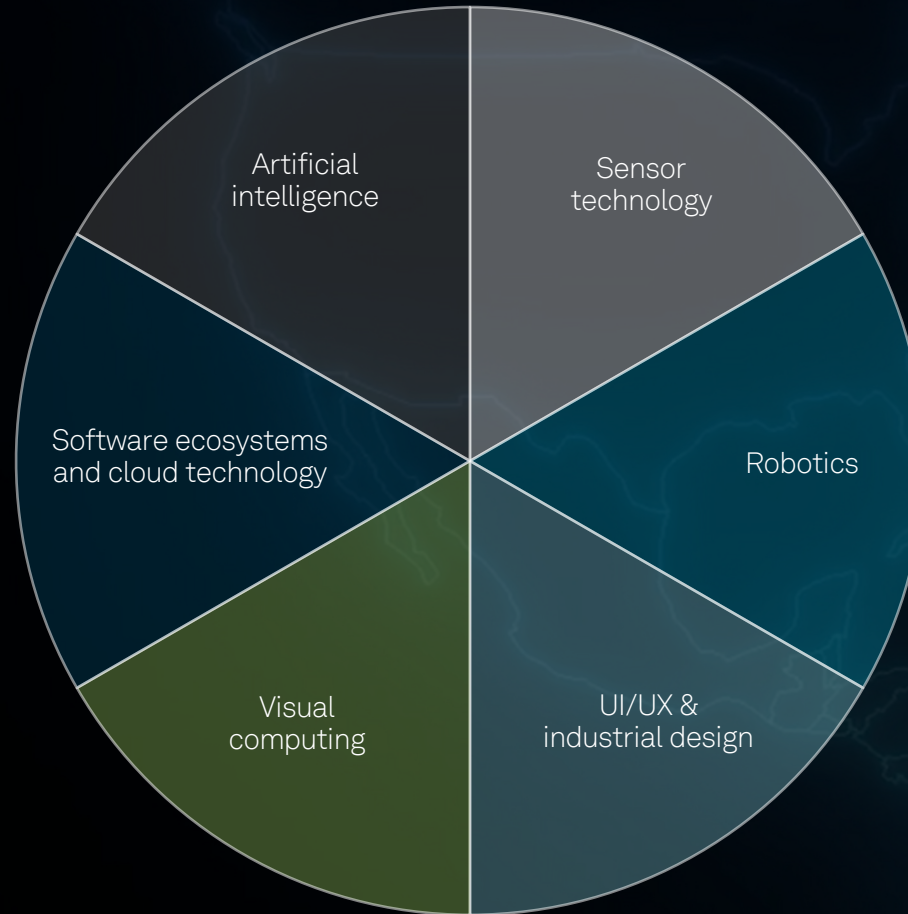
Asset Lifecycle  
Intelligence

Autonomous  
Solutions

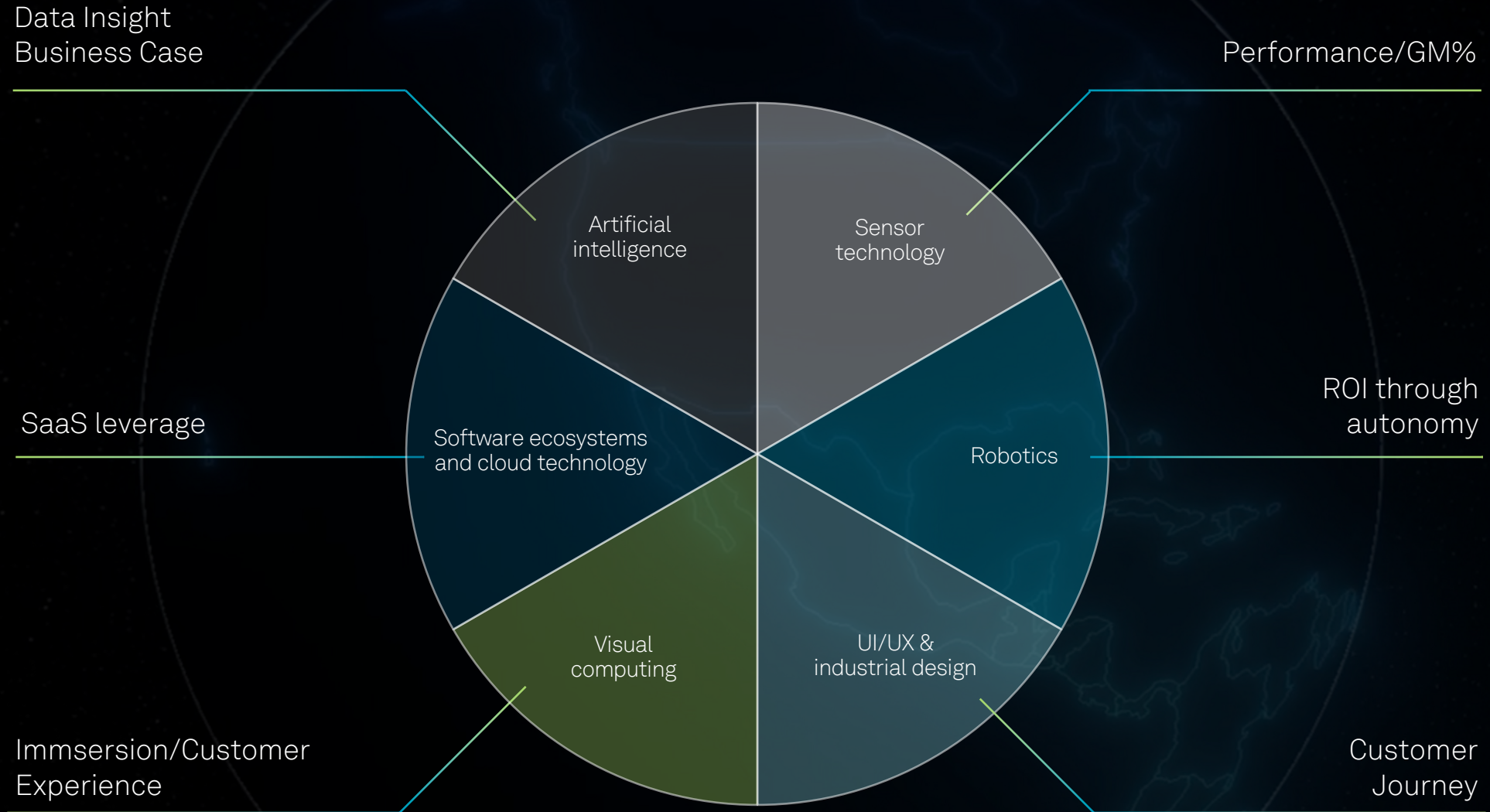
Innovation  
Hub



# Innovation Hub



# Innovation Hub – Future impact of business





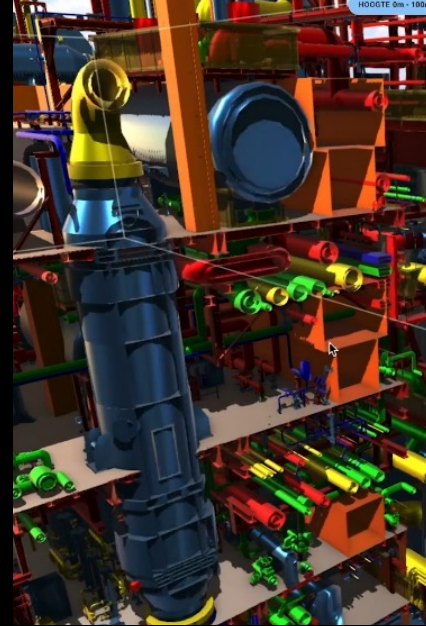
# Transform the market



Artificial  
intelligence



Visual and spatial  
computing



Industrial  
metaverse



Robotics



## Defy Expectations: Evolution of a market leader



BLK360

November  
2016



BLK3D

June  
2018



BLK247



BLK2GO

June  
2019



BLK2FLY



September  
2021



BLK360 G2

June  
2022



October  
2023

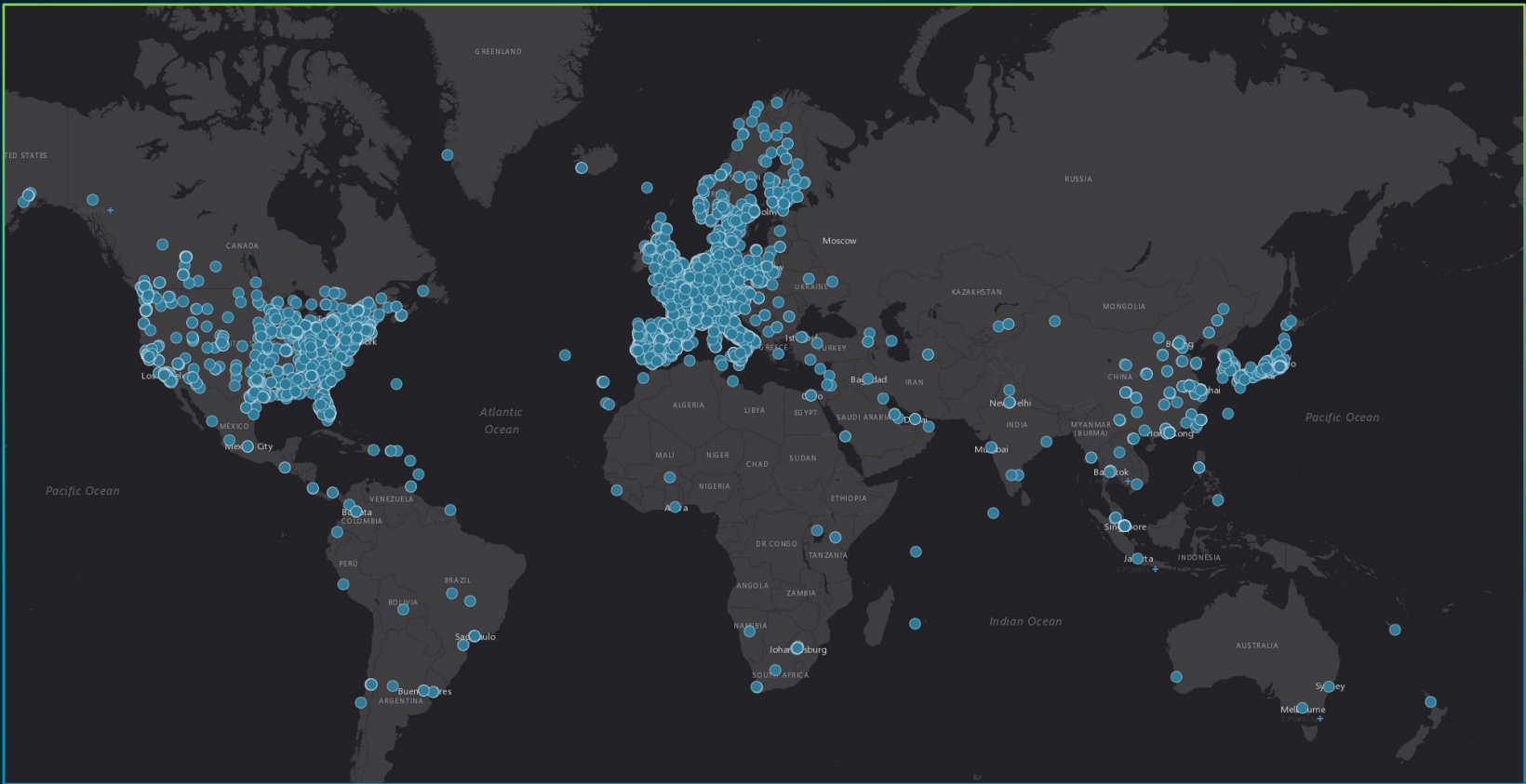


# Defy Expectations: BLK transformation metrics

**75%**  
Gross profit

**50%+**  
customers new  
to Hexagon

Global  
distribution  
of products



BLK360



BLK2GO



BLK2GO PULSE



BLK ARC



BLK2FLY



BLK3D



BLK247





# R&D Efficiency

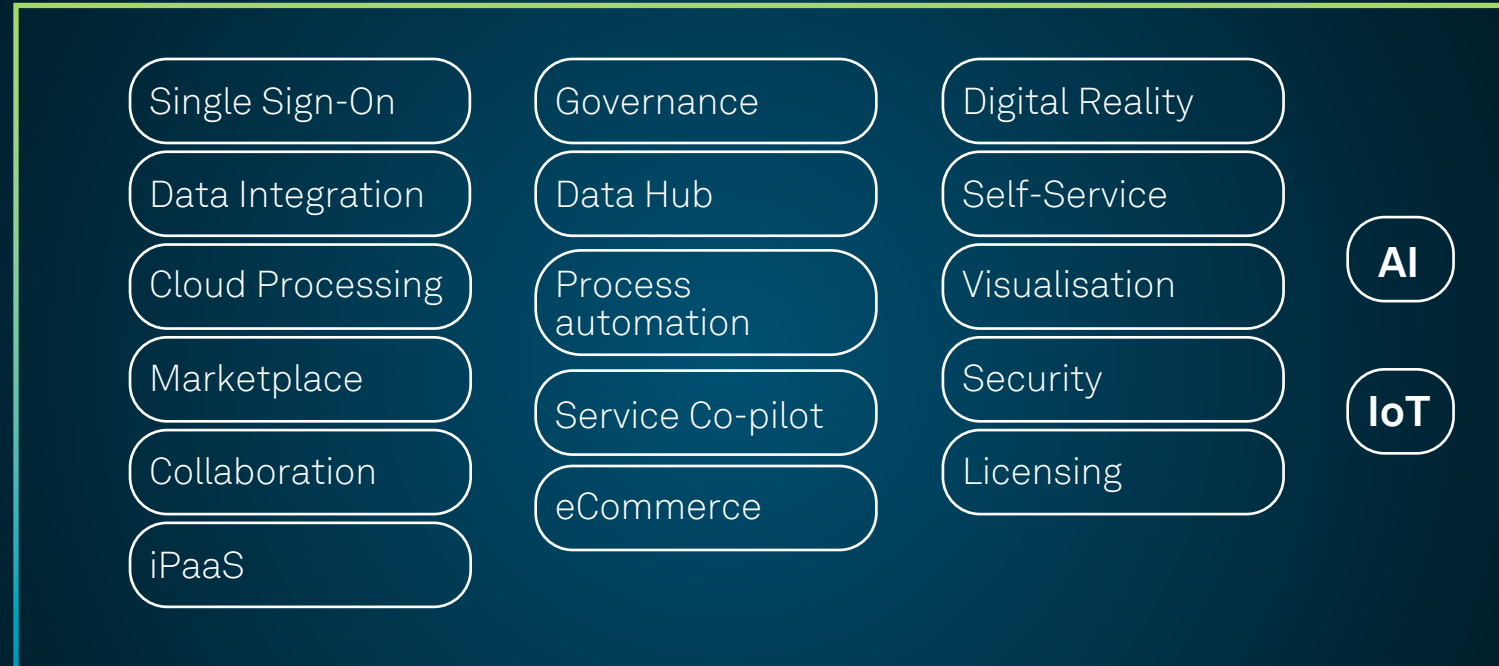
## Software

## Hardware

Single Sign-On	Governance	Digital Reality	<b>AI</b> <b>IoT</b>	Encoder	GNSS	Control
Data Integration	Data Hub	Self-Service		Tilt	Imaging	Inertial
Cloud Processing	Process automation	Visualisation		GrandSLAM	Connectivity	LiDAR
Marketplace	Service Co-pilot	Security		Edge Processing	ATR	Security
Collaboration	eCommerce	Licensing				
iPaaS				Radar		

# R&D Efficiency

## Software



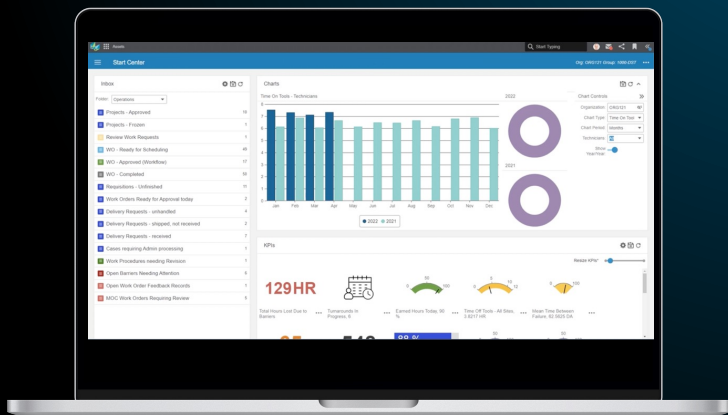
# R&D Efficiency: Software Platform



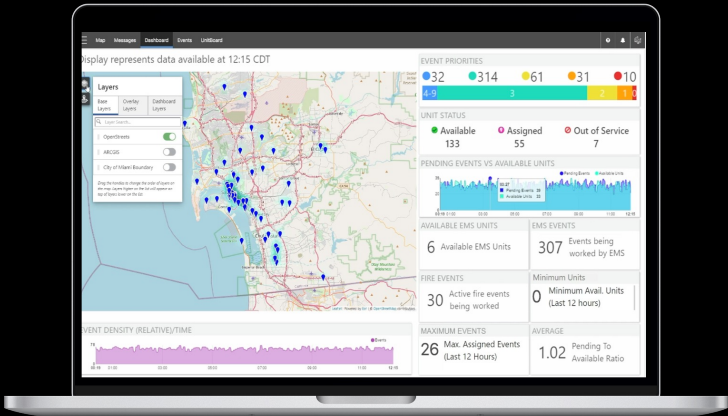
**HxDR**  
DIGITAL REALITY



SDx



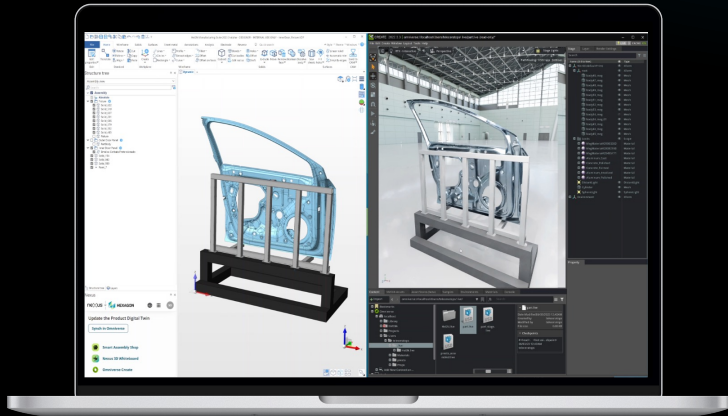
EAM



OnCall



Power of One



ne::us





## COLLABORATION

---

**30,000+**

active  
Nexus users



## CONNECTIVITY

---

**2,000+**

IoT devices  
managed



## DIGITALISATION

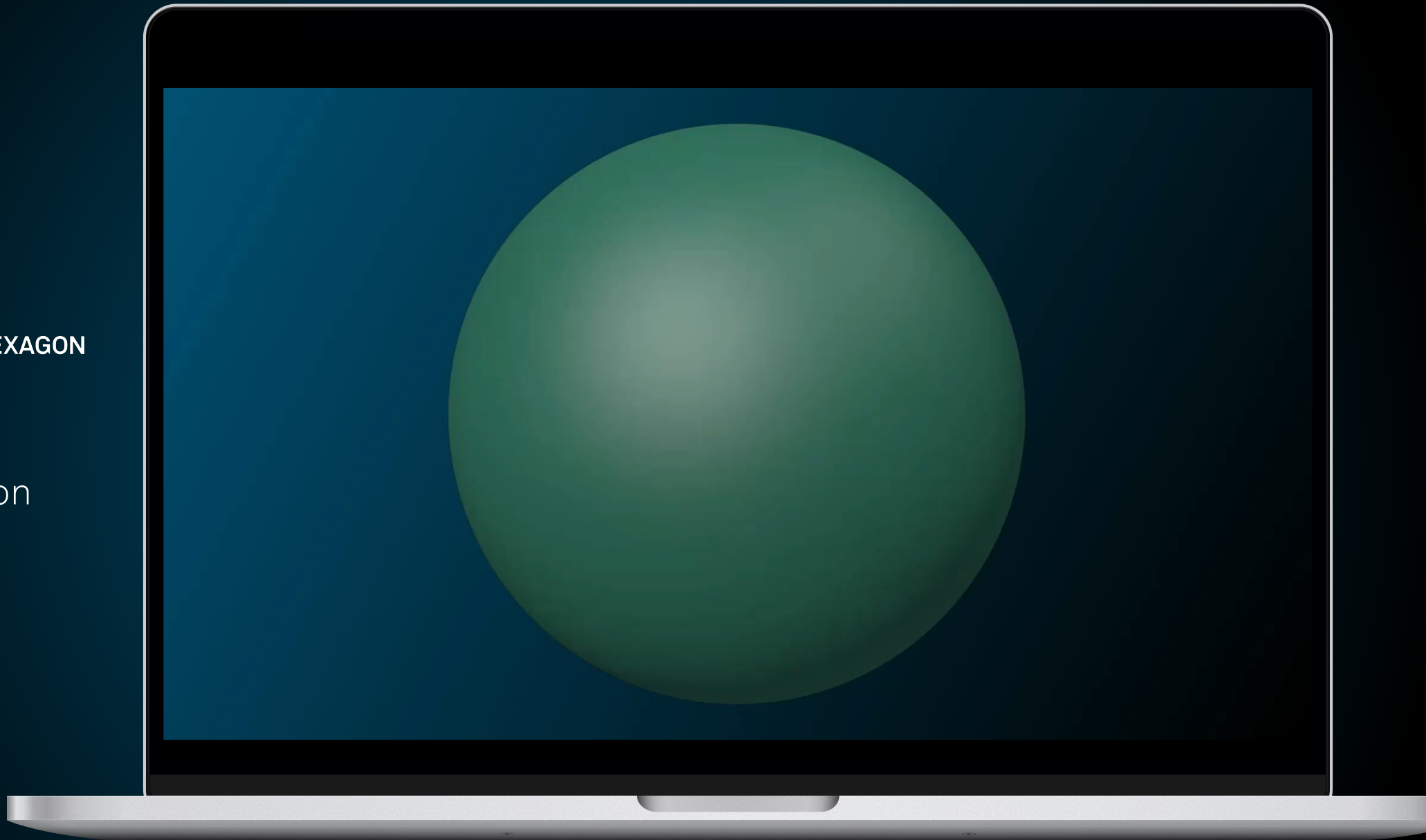
---

**146,000+**

digital workflows  
per month

ne<sup>•••</sup>us<sup>®</sup> BY  HEXAGON

Enabling  
fast innovation





**HxDR**  
DIGITAL REALITY



Collaboration  
and visualisation

---

**20,000+**  
users



Scalable  
cloud storage

---

**1600 TB**  
of data



Automated  
processing

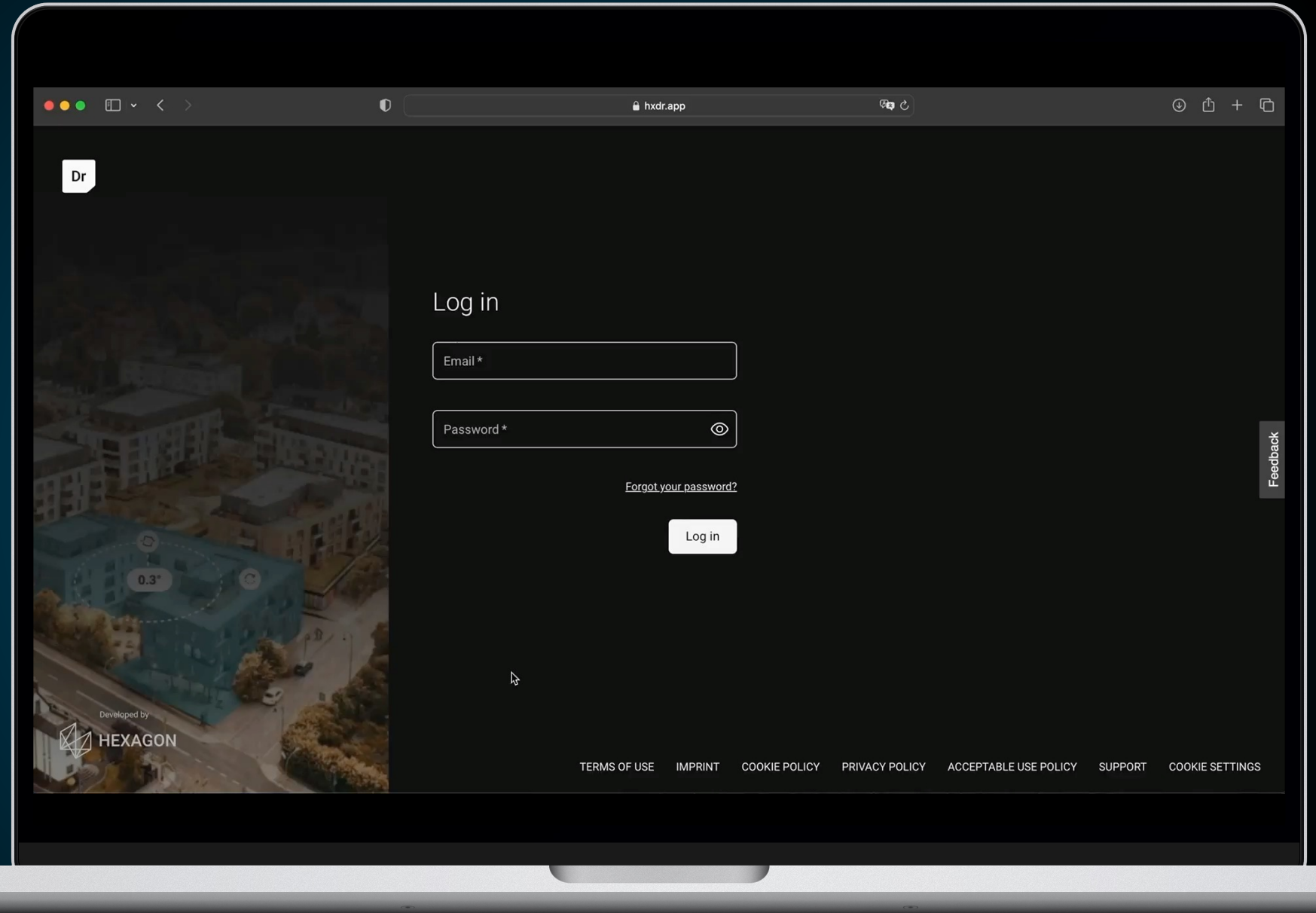
---

**1 TB**  
processing daily



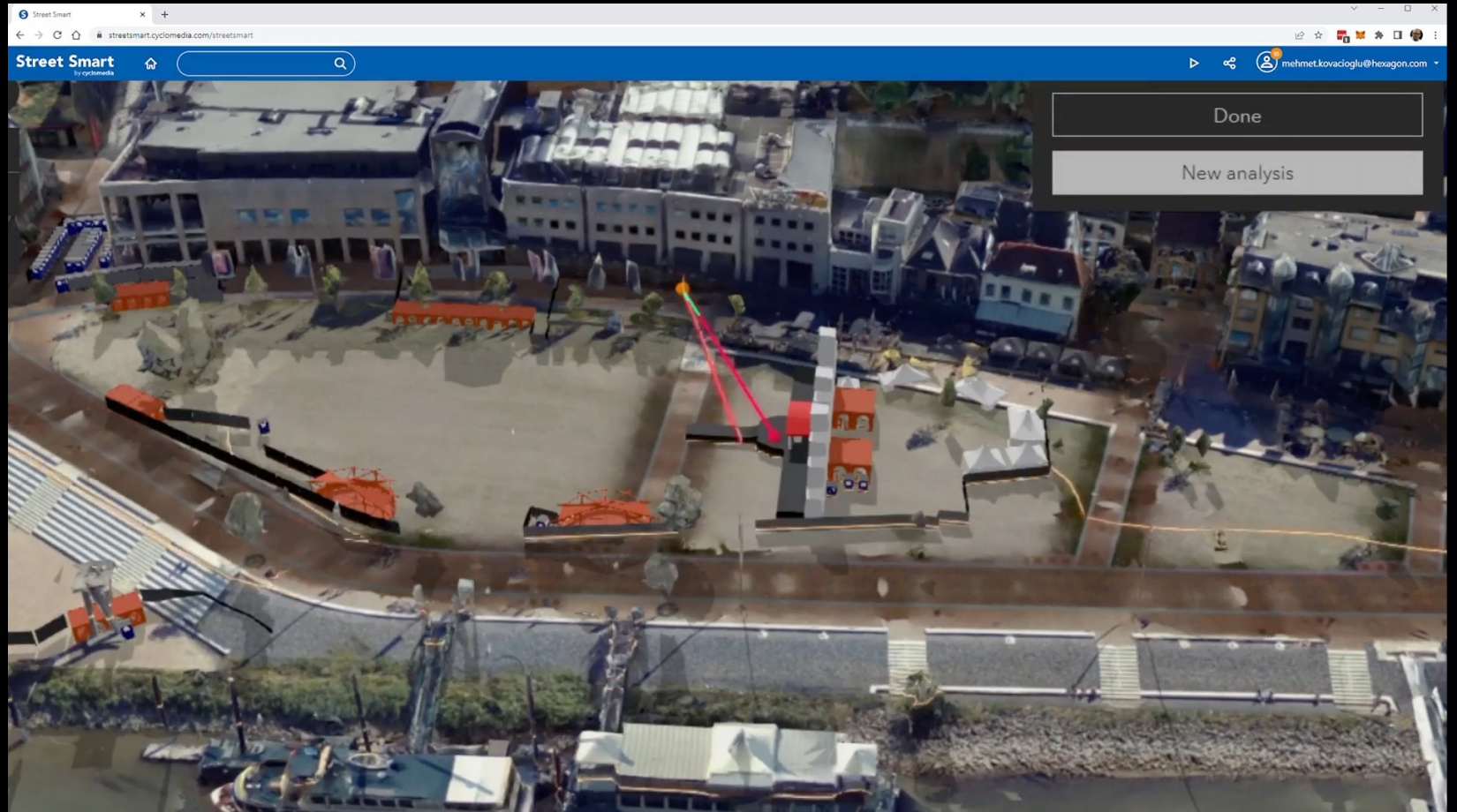


**HxDR**  
DIGITAL REALITY





**HxDR**  
DIGITAL REALITY





## Featured partnerships







# Hexagon x NVIDIA

Industrial metaverse connected platforms



 Reality capture digital twin



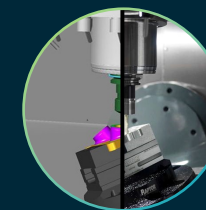
Capture  
devices  
& content

## neXus

Machine & product  
digital twins



Real data  
Shopfloor & quality



Virtual data  
Design & simulation

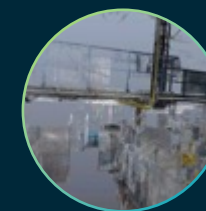
## HxDR

DIGITAL REALITY

Factory & city  
digital twins



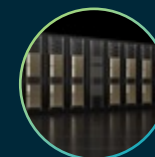
Auto processing



Direct upload  
to cloud



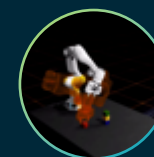
Visualisation



Accelerated  
computing



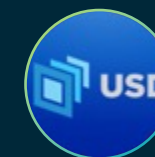
Generative  
AI



Physics



RTX



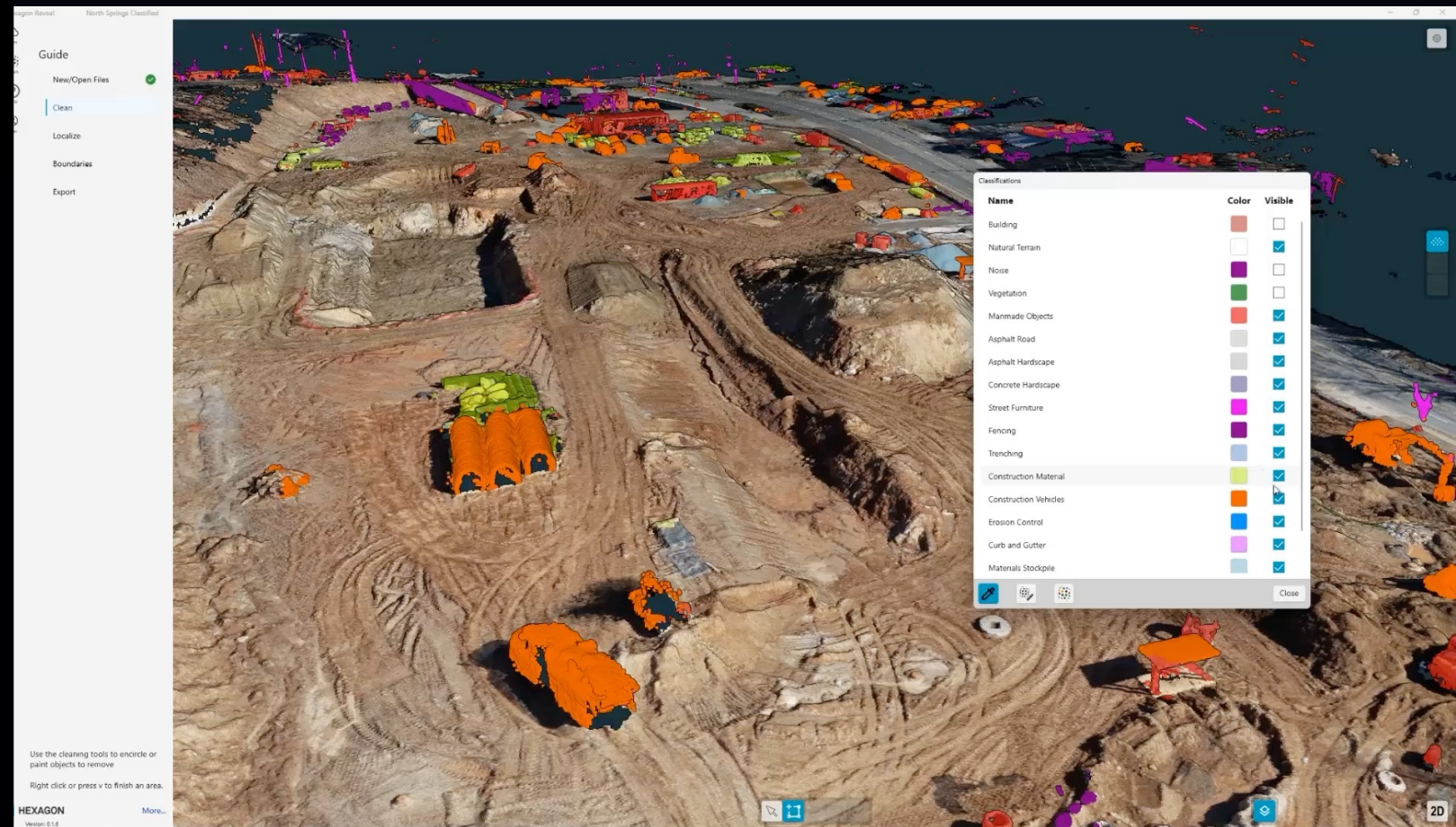
OpenUSD

# Partnership in action





# Industrial metaverse

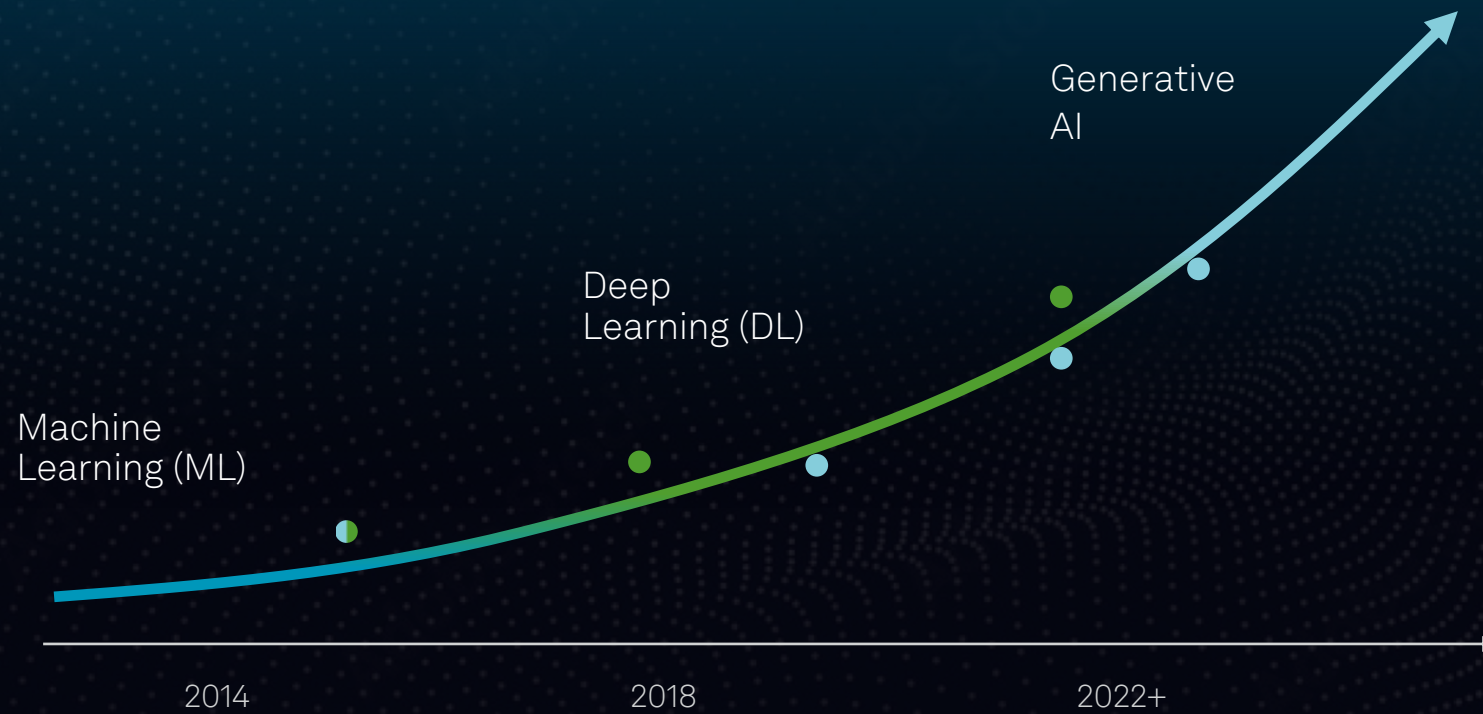




The background is a dark blue field filled with a dense, slightly blurred pattern of white binary digits (0s and 1s). Overlaid on this are several glowing blue lines that follow a wavy, undulating path across the frame. These lines are punctuated by small, bright white dots. In the center of the image, where the lines converge, there is a bright, star-like white glow. The overall effect is one of dynamic digital energy and data flow.

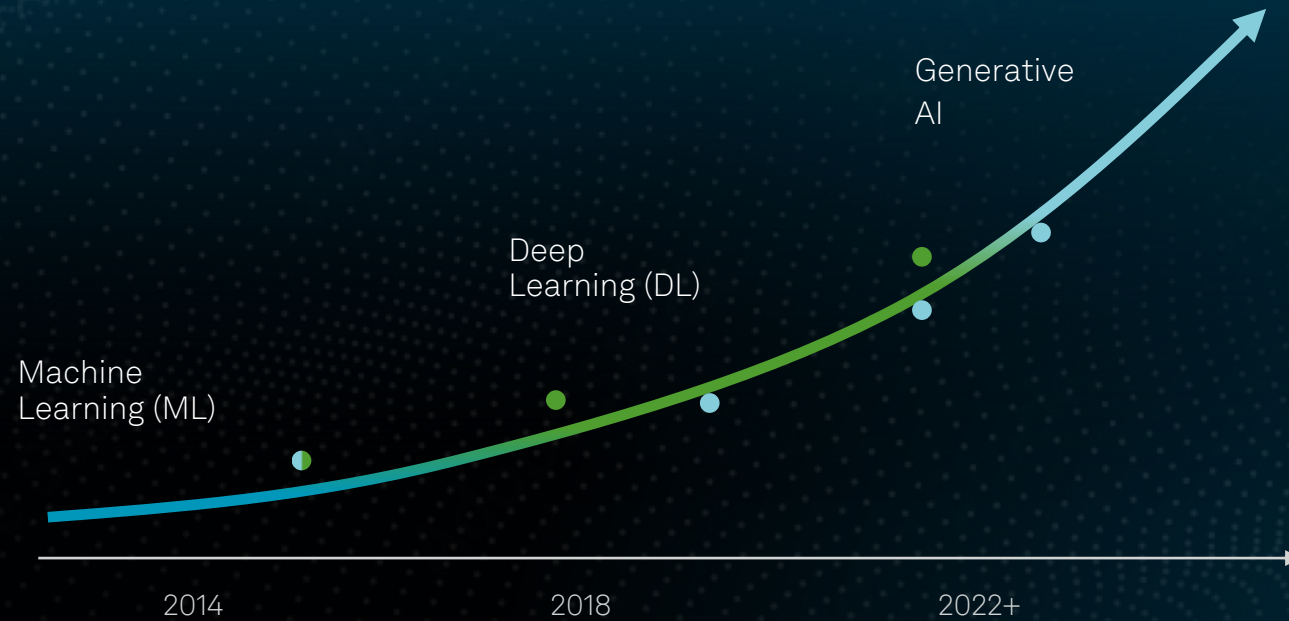
Artificial  
Intelligence

# Artificial Intelligence journey at Hexagon





# Artificial Intelligence journey at Hexagon

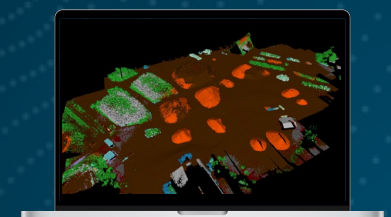
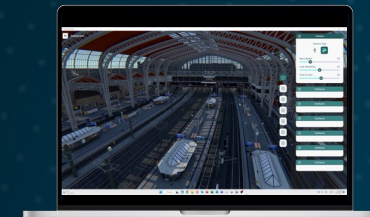
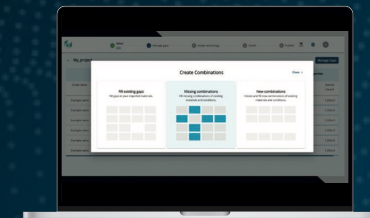
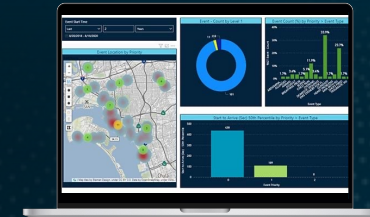
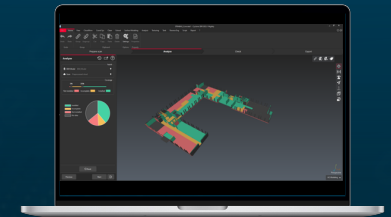


Artificial  
Intelligence

Machine  
Learning

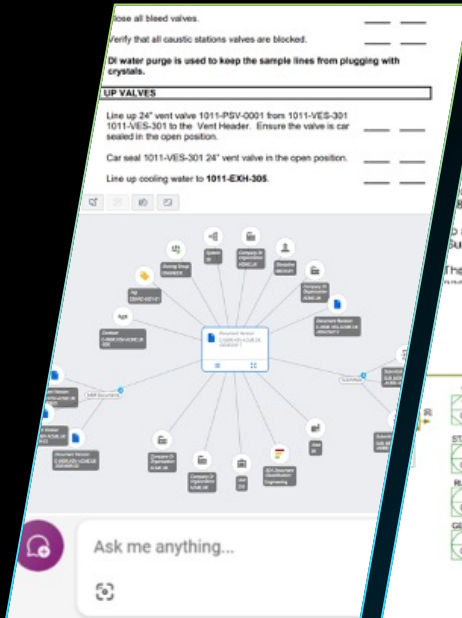
Deep  
Learning

Generative  
AI

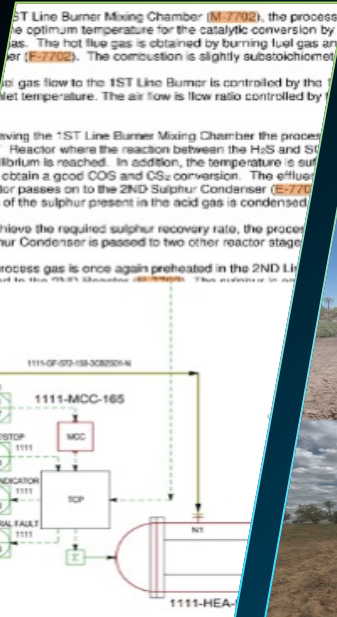


# Artificial Intelligence in Hexagon

Domain Specific (Various AI techniques)



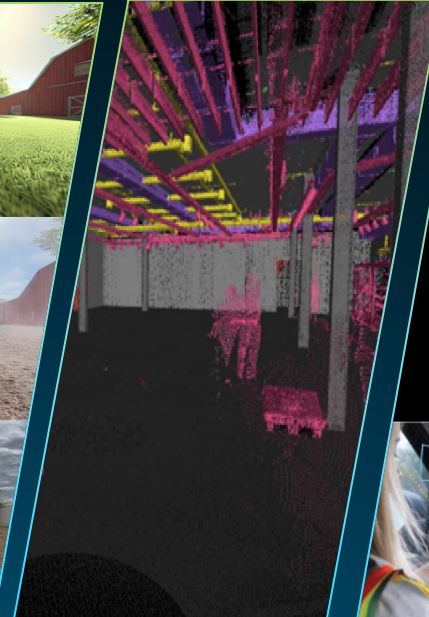
CoPilots



Documents



Scenes



Scans



Devices



Sensors

Universal Applicability (Generative AI)



Robotics





# Robotics





---

R&D  
strategy



---

Product  
innovation



---

Technology  
leadership